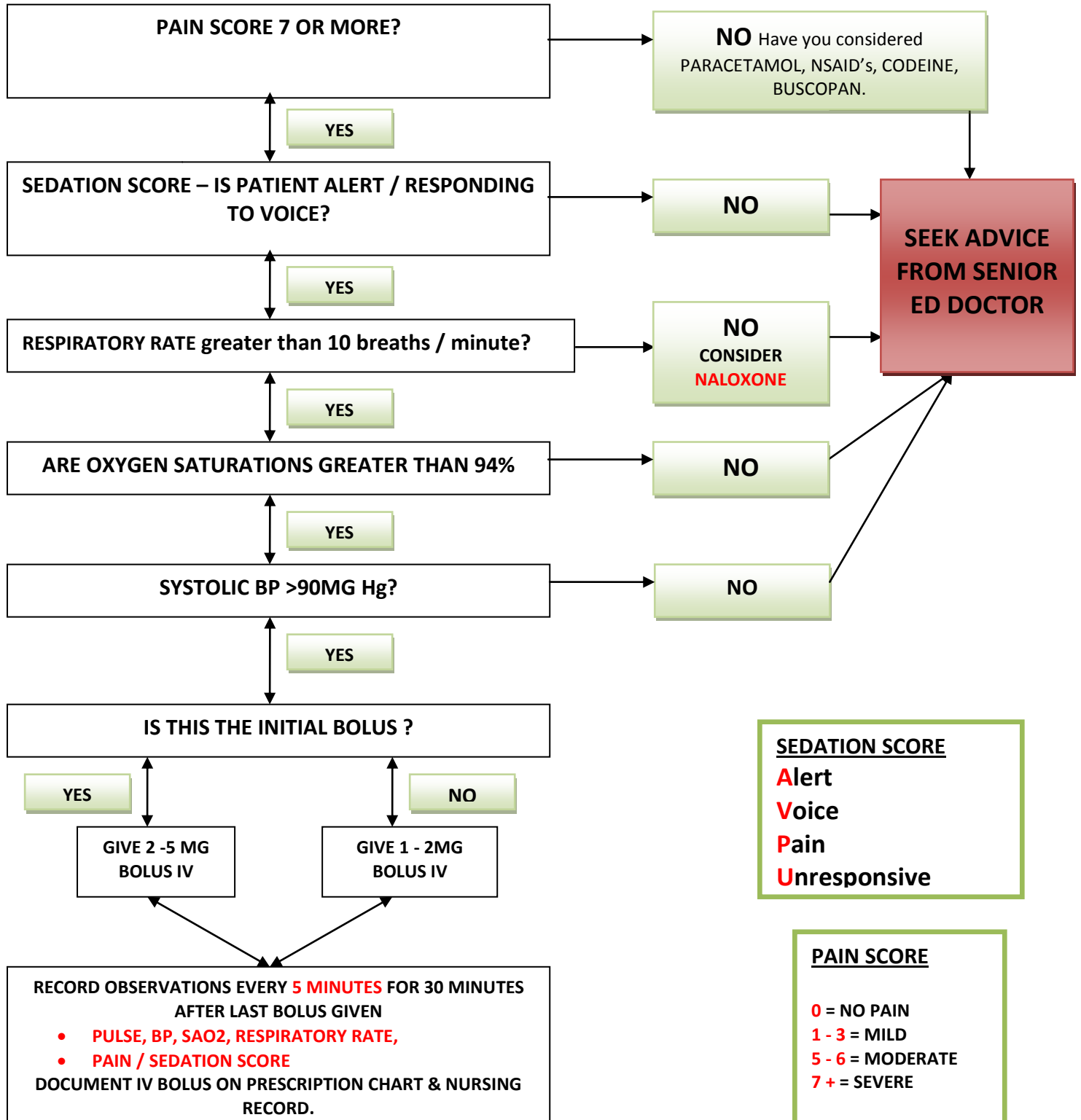


# INTRAVENOUS MORPHINE PROTOCOL

## FOR USE IN EMERGENCY DEPARTMENT ONLY

DOSE – 1mg / ml (max. dose 10mg )



- ✓ THIS ALGORITHM CAN BE USED TO GIVE UP TO A TOTAL OF 10MG
- ✓ OXYGEN SUPPLEMENTATION FOR DURATION OF IV ADMINISTRATION.