



Public Health
England

Protecting and improving the nation's health

Tetanus

Guidance on the management of
suspected tetanus cases and on the
assessment and management of tetanus
prone wounds

About Public Health England

Public Health England exists to protect and improve the nation's health and wellbeing, and reduce health inequalities. We do this through world-leading science, knowledge and intelligence, advocacy, partnerships and the delivery of specialist public health services. We are an executive agency of the Department of Health and Social Care, and are a distinct delivery organisation with operational autonomy. We provide government, local government, the NHS, industry and the public with evidence-based professional, scientific and delivery expertise and support.

Public Health England

Wellington House

133-155 Waterloo Road

London SE1 8UG

Tel: 020 7654 8000

www.gov.uk/phe

Twitter: [@PHE_uk](https://twitter.com/PHE_uk)

Facebook: www.facebook.com/PublicHealthEngland

Prepared by: Gayatri Amirthalingam, Gauri Godbole, Meera Chand, Norman Fry, Colin Brown, Joanne White, Charlotte Gower

Acknowledgements:

The authors gratefully acknowledge the expert review and advice received from:

- Colleagues in the PHE immunisation, Hepatitis and Blood Safety Department
- Dr Paul Stickings and colleagues at NIBSC
- Dr Abhishek Katiyar at Royal Free London NHS Foundation Trust

This guidance was approved and signed off by the PHE Vaccine Science and Surveillance Group which includes representation from the Joint Committee on Vaccination and Immunisation (JCVI) and Northern Ireland, Scotland and Wales.

© Crown copyright 2018

You may re-use this information (excluding logos) free of charge in any format or medium, under the terms of the Open Government Licence v3.0. To view this licence, visit [OGL](https://www.ogcl.gov.uk) or email psi@nationalarchives.gsi.gov.uk. Where we have identified any third party copyright information you will need to obtain permission from the copyright holders concerned.

Published November 2018

PHE publications

gateway number: 2018593

PHE supports the UN

Sustainable Development Goals



Contents

About Public Health England	2
Key Changes to Guidance	4
Scope of this document	5
1. Causative Organism	5
2. National Epidemiology	5
3. Clinical Features	6
4. Diagnosis	6
4.1 Laboratory testing to support clinical diagnosis	7
Samples	7
Testing	8
5. Clinical Management	8
5.1 Treatment of Clinical Tetanus with Intravenous Immunoglobulin (IVIG)	8
6. Preventative Measures	10
6.1. Primary Prevention	10
6.1.1 Occupational Health	10
6.2 Management of Tetanus Prone Wounds	11
6.2.1 Post-exposure Prophylaxis of Tetanus Prone Wounds with Tlg for Intramuscular use (IM-Tlg)	13
7. Reporting	15
References	16
Appendix 1: Algorithm for diagnosis of tetanus	18
Appendix 2: Results from Tetanus Antitoxin assays for Human Normal Immunoglobulin	19
Manufacturers' contact details:	20
Appendix 3: Useful Contact Details	21

Key Changes to Guidance

- These revised guidelines amalgamate previous guidelines on management of clinical tetanus and provide updated advice on laboratory testing and treatment of suspected tetanus cases and management of tetanus prone wounds.
- Emphasis is placed on the clinical diagnosis of suspected tetanus (rather than waiting for the results of laboratory investigations) as the major criterion for initiating treatment and case management.
- The guidance emphasises the importance of PCR as the primary confirmatory laboratory test for the presence of tetanus toxin. However, a negative result is insufficient to exclude clinical tetanus.
- Whilst historically serology testing has been a key method to support the investigation of clinically suspected tetanus, a review of recent cases highlighted that some cases of clinical tetanus occurred in the presence of protective levels of anti-tetanus antibodies (>0.1U/ml). Therefore antibody levels above the protective threshold is also not sufficient to rule out clinical tetanus.
- Since the publication of interim guidance on use of intravenous immunoglobulin (IVIG), testing of additional IVIG products for the presence of anti-tetanus antibodies has been undertaken by the National Institute for Biological Standards and Control (NIBSC) and is summarised. Recommendations for IVIG now incorporate results from this additional testing.
- Guidance of classification of tetanus-prone wounds has been updated
- Revised guidance on the use of intramuscular Tetanus specific immunoglobulin (IM-TIg) and Human Normal Immunoglobulin (HNIG) for the management of tetanus-prone wounds is included in response to ongoing supply shortages. The updated guidance, which has been approved by the UK Joint Committee on Vaccination and Immunisation (JCVI) has been informed by an evidence review of the comparative boosting of a prophylactic dose of TIG with a booster dose of tetanus vaccine.

Scope of this document

The scope of this document is to assist in the diagnosis, treatment and clinical management of cases of tetanus and in the management of tetanus prone wounds. Further detailed information on tetanus vaccine and the national vaccination programme is available in the Green Book¹.

<https://www.gov.uk/government/publications/tetanus-the-green-book-chapter-30>

1. Causative Organism

Tetanus is caused by a neurotoxin produced by *Clostridium tetani*, an anaerobic spore-forming bacillus. *C. tetani* can be present in the gastrointestinal tract and faeces of horses and other animals. The spores are widespread in the environment, including in soil, and can survive hostile conditions for long periods of time. Human infection is acquired when tetanus spores are introduced into wounds. Classically this is through contaminated trauma, however tetanus may also follow injecting drug use or abdominal surgery. In some cases no exposure is reported and it is assumed that unnoticed minor wounds were the route of entry. The incubation period of the disease is usually between 3 and 21 days, although it may range from one day to several months, depending on the character, extent and localisation of the wound²

2. National Epidemiology

The incidence of tetanus decreased substantially following the introduction of national tetanus immunisation in 1961¹. On average, over the last three decades, there have been less than ten cases of tetanus per year reported in England and Wales³. Immunisation provides personal protection only since, as *C. tetani* is an environmentally acquired organism, there is no herd immunity effect. Between 2001-2017, 111 cases of tetanus were reported to Public Health England through multiple data sources (range 3-22 cases per year)³⁻⁵. The highest incidence has been observed among individuals aged over 64 years old who are at highest risk of being under-immunised, with very few cases of tetanus reported amongst children. Of the cases with information on immunisations status, less than 10% were appropriately immunised for their age. A characteristic of two of the recent tetanus cases in older individuals was that they were documented as having received a "booster" dose of a tetanus-toxoid containing vaccine, despite no evidence of primary vaccination.

More recently there has been a trend to more localised rather than generalised tetanus and the over-all case-fatality rate among all reported cases of tetanus in England and Wales reduced from 29% between 1984 and 2000⁶ to 11% in the following 14 years⁷ suggesting the severity of illness may be decreased by partial immunity. Of the ten

deaths reported in England & Wales between 2000 and 2017, four were cryptogenic with no reported injury.

Between July 2003 and September 2004, the first cluster of cases in people who inject drugs (PWID) in the UK was identified. This included 25 clinically diagnosed cases in young adults, of which two patients died (case fatality 8%)⁸. Potential sources of *C. tetani* in PWID include contamination of drugs, adulterants, paraphernalia, and skin. Intramuscular and subcutaneous drug use, in particular, is associated with tetanus infections⁹. Following this cluster in 2003/4, only nine sporadic cases of tetanus were reported in PWID to the end of 2017.

3. Clinical Features

The most common presentation of tetanus is generalised tetanus, however two other forms, local and cephalic, are also described². Neonatal tetanus is also described but has been eliminated in the UK for decades.

Generalised tetanus is characterised by trismus (lockjaw), tonic contractions and spasms. Tonic contractions and spasms may lead to dysphagia, opisthotonus and a rigid abdomen. In severe cases they may cause respiratory difficulties. Autonomic instability is typical. Consciousness is not affected.

Localised tetanus is rigidity and spasms confined to the area around the site of the infection and may be more common in partially immunised individuals. Localised symptoms can continue for weeks or may develop into generalised tetanus.

Cephalic tetanus is localised tetanus after a head or neck injury, involving primarily the musculature supplied by the cranial nerves.

4. Diagnosis

Tetanus is primarily a clinical diagnosis⁶. A probable case can be defined as:

*'In the absence of a more likely diagnosis, an acute illness with muscle spasms or hypertonia, **AND** diagnosis of tetanus by a health care provider'*.

The key clinical features of generalised tetanus include at least two of the following:
(i) Trismus (Painful muscular contractions primarily of the masseter and neck muscles leading to facial spasms) (ii) Painful muscular contractions of trunk muscles and (iii) Generalized spasms, frequently position of opisthotonus.

Severity can be graded as overleaf:

Grading of severity	
Grade 1 (mild):	<ul style="list-style-type: none"> • mild to moderate trismus and/or general spasticity, little or no dysphagia, no respiratory embarrassment
Grade 2 (moderate):	<ul style="list-style-type: none"> • moderate trismus and general spasticity, some dysphagia and respiratory embarrassment, and fleeting spasms occur.
Grade 3a (severe):	<ul style="list-style-type: none"> • severe trismus and general spasticity, severe dysphagia and respiratory difficulties, and severe and prolonged spasms (both spontaneous and on stimulation).
Grade 3b (very severe):	<ul style="list-style-type: none"> • as for severe tetanus plus autonomic dysfunction, particularly sympathetic overdrive.

Localised tetanus (see Section 3) can present with symptoms around the site of the wound.

4.1 Laboratory testing to support clinical diagnosis

Laboratory tests are available to support the clinical diagnosis. Although a serum sample should be taken before administering immunoglobulin, **treatment of clinical case of tetanus should never be delayed to wait for the laboratory result.** [See **Appendix 1: Algorithm for diagnosis of tetanus**] and case management should proceed based on clinical review including clinical presentation, history of injury and vaccination status.

Samples

- 1. Wound samples:** If there is an obvious wound, tissue or a wound swab may be sent in cooked meat broth for PCR and culture isolation of *C.tetani*. Tissue is the best specimen and debridement has an additional therapeutic benefit which is crucial in the management of tetanus.
- 2. Isolates from culture:** Suspect clinical isolates should be sent in cooked meat broth.
- 3. Serum:** A serum sample may also be collected. This should be taken before immunoglobulin is given. At least 3ml of serum or clotted blood are required.

All samples should be sent together to the Gastrointestinal Bacteria Reference Unit (GBRU), Public Health England, 61 Colindale Avenue London NW9 5EQ. Please notify the laboratory when sending samples (Tel: 0208 327 7887).

Testing

Laboratory investigations available to support a diagnosis of tetanus are:

- **Detection of *C. tetani*** in wound material or from a pure isolate, by direct PCR and culture methods. A negative result does not exclude tetanus. This is the most sensitive test currently in use and wound debridement to obtain samples is clinically beneficial.
- **Detection of toxin in serum.** This is a bio-assay and is only performed if the antibody level is below 0.1IU/ml. At higher serum antibody concentrations, the free toxin level is too low to be detected by the assay. A negative bioassay does not exclude tetanus. Cases requiring toxin testing should be discussed with the Gastrointestinal Bacteria Reference Unit (GBRU), Tel 0208 327 7887.
- **Detection of IgG against tetanus toxoid in serum.** An antibody level of <0.1 IU/ml in serum taken during the acute illness but before administration of any immunoglobulin can support the diagnosis of tetanus. An antibody level of 0.1 IU/ml or above does not, however, exclude the diagnosis of tetanus. If in doubt regarding interpretation of the result, please contact the Respiratory and Vaccine Preventable Bacteria Reference Unit (RVPBRU) for advice (Tel; 0208 327 7887). POC Ab testing kits are not recommended for use in diagnosis of suspected tetanus (see below).

5. Clinical Management

Clinical management of suspected tetanus (including localised tetanus) includes:

- Wound debridement
- Antimicrobials including agents reliably active against anaerobes such as intravenous benzylpenicillin, metronidazole can be used, please discuss with your local Microbiology team about choice of antibiotics and doses.
- Intravenous Immunoglobulin (IVIG) based on weight (see section 5.1)
- Vaccination with tetanus toxoid following recovery (see section 6.1)
- Supportive care (benzodiazepines for muscle spasms, treatment of autonomic dysfunction, maintenance of ventilation, nursing in a quiet room etc)

5.1 Treatment of Clinical Tetanus with Intravenous Immunoglobulin (IVIG)

Early treatment with human intravenous immunoglobulin (IVIG) can be lifesaving and its use should be considered based on clinical judgement or diagnosis. An IV tetanus immunoglobulin (TIG) product is no longer available in the UK. In the absence of IV TIG, IVIG is the recommended treatment for clinical suspected tetanus. This is based on previous testing of the IVIG product Vigam 5% for anti-tetanus antibodies, which was carried out by the National Institute for Biological Standards and Control (NIBSC) and showed that Vigam contained reasonable levels of tetanus antibody when

measured by ELISA which correlated well with in vivo Toxin Neutralising Test (TNT) anti-toxin assays. More recently, seven further IVIG products that were being used in the NHS: Gammaplex 5%, Privigen 10%, Octagam 10%, Intratect (5% & 10%) and Flebogama (5% & 10%) have been tested for the presence of anti-tetanus antibodies by NIBSC and have been shown to be comparable in terms of their anti tetanus potency. Test results are shown in Appendix 2.

The recommended dose of anti-tetanus antibodies is based on weight:

- For individuals less than 50 kg, 5,000 IU (international units)
- For individuals over 50 kg, 10,000 IU

The volume of human IVIG required to achieve the recommended dose of anti-tetanus antibodies is:

IVIg Products tested for anti-tetanus antibodies	Volume required (in ml)	
	For individuals < 50kg	For individuals > 50kg
Gammaplex 5%, Intratect 5%, Flebogamma 5%, Vigam 5%	400ml	800ml
Privigen 10%, Octagam 10%, Intratect 10%, Flebogamma 10%	200ml	400ml

*Due to the slight variability between the products and batches, the lowest antibody levels found have been used to calculate the doses of intravenous immunoglobulin required to achieve the recommended dose of anti-tetanus antibodies.

Please note that intravenous immunoglobulin (IVIG) is **not** available from Public Health England (PHE). Healthcare Trusts should contact Manufacturers directly for supply (see Appendix 2).

For advice regarding clinical management of cases or other queries relating to suspected cases during offices hours, please contact the on call duty Consultant Microbiologist, PHE Colindale on 0208 327 6736 or email ColindaleMedMicro@phe.gov.uk. The PHE duty doctor is requested to discuss all suspected cases with the on-call Consultant Microbiologist if calls are received during working hours. Out of hours please contact the PHE Duty Doctor on call 0208 200 4400 for all queries and advice.

6. Preventative Measures

6.1. Primary Prevention

Effective protection against tetanus can be achieved through active immunisation with tetanus vaccine, which is a toxoid preparation. A total of five doses of vaccine at the appropriate intervals are considered to provide lifelong immunity.¹ Single antigen tetanus vaccine (T) and combined tetanus/low dose diphtheria vaccine (Td) have been replaced by the combined tetanus/low dose diphtheria/inactivated polio vaccine (Td/IPV) for adults and adolescents for all routine uses in these age groups.¹¹ Recovery from tetanus may not result in immunity and vaccination following tetanus is indicated. A full course of tetanus and diphtheria vaccines consists of 5 doses as follows:

SCHEDULE	CHILDREN	ADULTS
Primary Course	3 doses of vaccine (usually as DTaP/IPV/Hib/HepB) at 2, 3 and 4 months of age	3 doses of vaccine (as Td/IPV) each one month apart
4th dose	At least 3 years after the primary course, usually pre-school entry (as DTaP/IPV)	5 years after primary course (as Td/IPV)
5th dose	Aged 13-18 years before leaving school (as Td/IPV)	10 years after 4th dose (as Td/IPV)

For further details see the tetanus chapter in “Immunisation against Infectious Disease” (Green book) available at:

<https://www.gov.uk/government/publications/tetanus-the-green-book-chapter-30>

<https://www.gov.uk/government/publications/vaccination-of-individuals-with-uncertain-or-incomplete-immunisation-status>

6.1.1 Occupational Health

Tetanus is not transmitted from person-to-person, so those caring for patients with tetanus are not at risk of acquiring tetanus from the patient. However, like the general population, if they have not received the recommended five doses of tetanus-containing vaccine or are unsure about their vaccination status, they should check with their GP practice.

6.2 Management of Tetanus Prone Wounds

Tetanus-prone wounds* include:

- puncture-type injuries acquired in a contaminated environment and likely therefore to contain tetanus spores* e.g. gardening injuries
- wounds containing foreign bodies such as wound splinters*
- compound fractures
- wounds or burns with systemic sepsis
- certain animal bites and scratches**

*Note: individual risk assessment is required and this list is not exhaustive e.g. a puncture-wound from discarded needle found in a park may be a tetanus-prone injury but a needlestick injury in a medical environment is not. **Similarly, although smaller bites from domestic pets are generally puncture injuries, animal saliva should not contain tetanus spores unless the animal has been rooting in soil or lives in an agricultural setting.

High-risk tetanus-prone wounds include:

Any of the above with either:

- heavy contamination with material likely to contain tetanus spores e.g. soil, manure
- wounds or burns that show extensive devitalised tissue
- wounds or burns that require surgical intervention that is delayed for more than six hours are high risk even if the contamination was not initially heavy

Thorough cleaning of wounds is essential, surgical debridement of devitalised tissue in high risk tetanus-prone wounds is crucial for prevention of tetanus. If the wound, burn or injury fulfils the above criteria, IM-TIG or HNIG should be given to neutralise toxin. A reinforcing dose of tetanus-containing vaccine should also be considered based on the immunisation status (see Table1). Consider treating tetanus prone-wounds with antibiotics (metronidazole, benzylpenicillin or coamoxiclav) depending on clinical severity with a view to preventing tetanus. Suspected cases of localised tetanus (where there is rigidity and/or spasms around the wound) should be treated as clinical cases as described in Section 4 and 5, and not as a tetanus-prone injury. Further doses of vaccine should be administered as required to complete the recommended schedule to provide long term protection.

Table 1: Tetanus Immunisation and Prophylaxis Following Injuries

Immunisation Status	Immediate treatment			Later treatment
	Clean wound ¹	Tetanus Prone	High risk tetanus prone	
<p>Those aged 11 years and over, who have received an adequate priming course of tetanus vaccine¹ with the last dose within 10 years</p> <p>Children aged 5-10 years who have received priming course and pre-school booster</p> <p>Children under 5 years who have received an adequate priming course</p>	None required	None required	None required	Further doses as required to complete the recommended schedule (to ensure future immunity)
<p>Received adequate priming course of tetanus vaccine² but last dose more than 10 years ago</p> <p>Children aged 5-10 years who have received an adequate priming course but no preschool booster</p> <p><i>Includes UK born after 1961 with history of accepting vaccinations</i></p>	None required	Immediate reinforcing dose of vaccine	<p>Immediate reinforcing dose of vaccine</p> <p>One dose of human tetanus immunoglobulin³ in a different site</p>	Further doses as required to complete the recommended schedule (to ensure future immunity)
<p>Not received adequate priming course of tetanus vaccine²</p> <p><i>Includes uncertain immunisation status and/or born before 1961</i></p>	Immediate reinforcing dose of vaccine	<p>Immediate reinforcing dose of vaccine</p> <p>One dose of human tetanus immunoglobulin³ in a different site</p>	<p>Immediate reinforcing dose of vaccine</p> <p>One dose of human tetanus immunoglobulin³ in a different site</p>	

1. Clean wound is defined as wounds less than 6 hours old, non penetrating with negligible tissue damage 2. At least three doses of tetanus vaccine. This definition of "adequate course" is for the risk assessment of tetanus-prone wounds only. The full UK schedule is five doses of tetanus containing vaccine at appropriate intervals 3. If TIG is not available, HNIG may be used as an alternative.

Patients who are severely immunosuppressed may not be adequately protected against tetanus, despite having been fully immunised and additional booster doses may be required.

Determination of vaccination status may not be possible at the time of assessment and therefore a number of Point of Care antibody (POC Ab) have been developed. There is limited information on the clinical benefits of these rapid immunoassays since the published studies are relatively small, with varying results in terms of sensitivity and specificity, and little data with reference to capacity of individuals to respond to antibody boosting. Given the lack of evidence on use in the clinical pathway, point of care antibody testing is currently not recommended for use in assessment of tetanus prone wounds or diagnosis of suspected tetanus by the WHO¹⁰. Determination of vaccination status using vaccination records remains the preferred method.

6.2.1 Post-exposure Prophylaxis of Tetanus Prone Wounds with Tlg for Intramuscular use (IM-Tlg)

Rationale for guidance on post exposure management

Supplies of TIG are sourced from a single supplier and for many years, there has been a supply shortage. In response, in 2013 a PHE convened expert working group advised the use of Human Normal Immunoglobulin product (Subgam), based on the results of potency testing, as an alternative when TIG could not be sourced by NHS Trusts. In July 2018, PHE became aware of a severe shortage of both TIG and Subgam available to the NHS due to manufacturing issues. PHE undertook an urgent review of the comparative boosting of a prophylactic dose of TIG with a booster dose of vaccine, and the likely susceptibility of the UK population, in order to prioritise the use of TIG /HNIG for those at genuine risk. Given the ongoing and serious issues with supply, interim guidance issued in July 2018 has now been formally approved by the UK Joint Committee on Vaccination and Immunisation (JCVI) for ongoing use.

Universal vaccination was introduced into the UK in 1961. In the UK, 5 doses of tetanus containing vaccine are routinely offered. The primary series of tetanus containing vaccine is at 2, 3 and 4 months of age, and then a school-entry booster is recommended at 3 years 4 months. Although antibody levels decline around five years after the primary series in infancy, there is an excellent response to the booster at 3 years 4 months of age and antibody levels persist at least until age 14, when the adolescent booster dose also results in rapid and high increase in antibody. A recent WHO review concluded that following the primary series, typically immunity persists for 10 years after the fourth dose and for at least 20 years after the fifth dose¹⁰.

The rationale for using IM-TIG in at-risk individuals is to sufficiently and rapidly raise antibody levels in exposed individuals with antibody levels below the protective threshold, and who are not expected to make a sufficiently rapid memory response to

vaccination. The median incubation period for tetanus is reported as 7 days but can range from 4-21 days and therefore it is important that either TIG or active boosting occurs promptly following an exposure. Peak levels are achieved 4 days after an IM dose. In individuals who receive a vaccine booster after have completed a full primary course, a measurable increase in antibody titres following a vaccine booster has been observed as early as 4 days, and levels increase substantially from day 7. The antibody levels achieved 5-7 days after a reinforcing dose of vaccine likely exceeds the estimated antibody boost from a prophylactic dose of IM-TIG in an adult.

The recommended dose of intramuscular TIG is:

- 250 (IU) for most uses
- 500 IU if more than 24 hours have elapsed or there is risk of heavy contamination or following burns.

The dose is the same for both adults and children.

IM-TIG is available in 1ml ampoules containing 250 units (IU). If TIG (for intramuscular use) cannot be sourced, Human Normal Immunoglobulin (HNIG) for subcutaneous or intra-muscular use may be given as an alternative.

Based on testing for the presence of anti-tetanus antibodies of one HNIG product, Subgam 16% in 2011 (see Appendix 2), the volume of Subgam 16% required to achieve the recommended dose of 250IU was approximately 5mls, or one vial of the 750mg Subgam product, administered intra-muscularly.

Based on in house manufacturer testing in 2018 of a newly available 1000mg Subgam product, which indicated a slightly lower anti-tetanus potency, the recommended dose of 250IU is 1 vial of the 1000mg product (equivalent to 6.4mls) to be administered intramuscularly in divided doses.

Please note this is contrary to the SPC which currently indicates a subcutaneous route of administration only, as this is the most common usage. PHE has not yet undertaken formal testing of other HNIG products for subcutaneous or intramuscular use but similar levels of anti-tetanus potency are likely, based on their immunoglobulin concentration.

The dose guidelines for management of tetanus prone wounds using IM-Tig or HNIG for subcutaneous use are summarised in the table overleaf:

Indications	IM-TIG	Subgam 16%
For most uses	250 IU	1 vial
If more than 24 hours have elapsed or there is risk of heavy contamination or following burns.	500 IU	2 vials

The dose guidelines for management of tetanus prone wounds using IM-Tig or HNIG for subcutaneous use.

NHS Trusts should source supplies of immunoglobulin for management of tetanus prone wounds directly from the manufacturer.

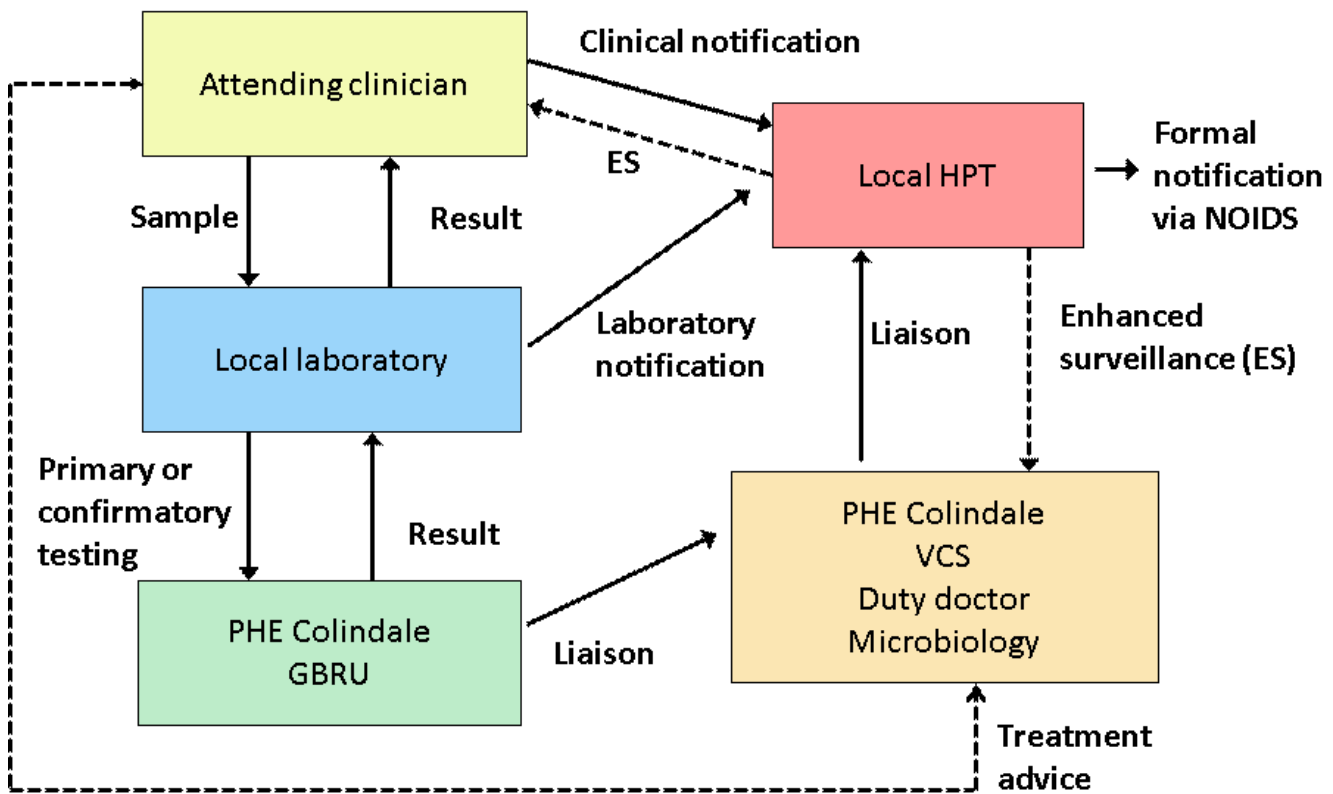
7. Reporting

Tetanus (local and generalised) is a notifiable disease. Doctors have a statutory duty to notify the ‘proper officer’ at their local council or local health protection team (HPT) of suspected cases. <https://www.gov.uk/health-protection-team>

Clinicians are requested to complete a notification form immediately on diagnosis of a suspected case without waiting for laboratory confirmation of a suspected infection . Diagnostic laboratories also have a statutory duty to report identification of *Clostridium tetani*. under the Health Protection (Notification) Regulations 2010¹².

Enhanced surveillance of tetanus for England is also carried out by the Immunisation and Countermeasures Division, National Infection Service, Public Health England. CCDCs/HPTs are requested to inform Charlotte Gower (Tel: 0208 327 7278, e-mail: <mailto:charlotte.gower@phe.gov.uk>) of details of the case using the enhanced surveillance questionnaire available at <https://www.gov.uk/government/publications/tetanus-enhanced-surveillance-questionnaire>. HPTs may need to consult NHS clinical colleagues to complete the questionnaire.

Figure 1 describes data flows between the local NHS laboratory, local Health Protection teams, and PHE Colindale for tetanus cases in England

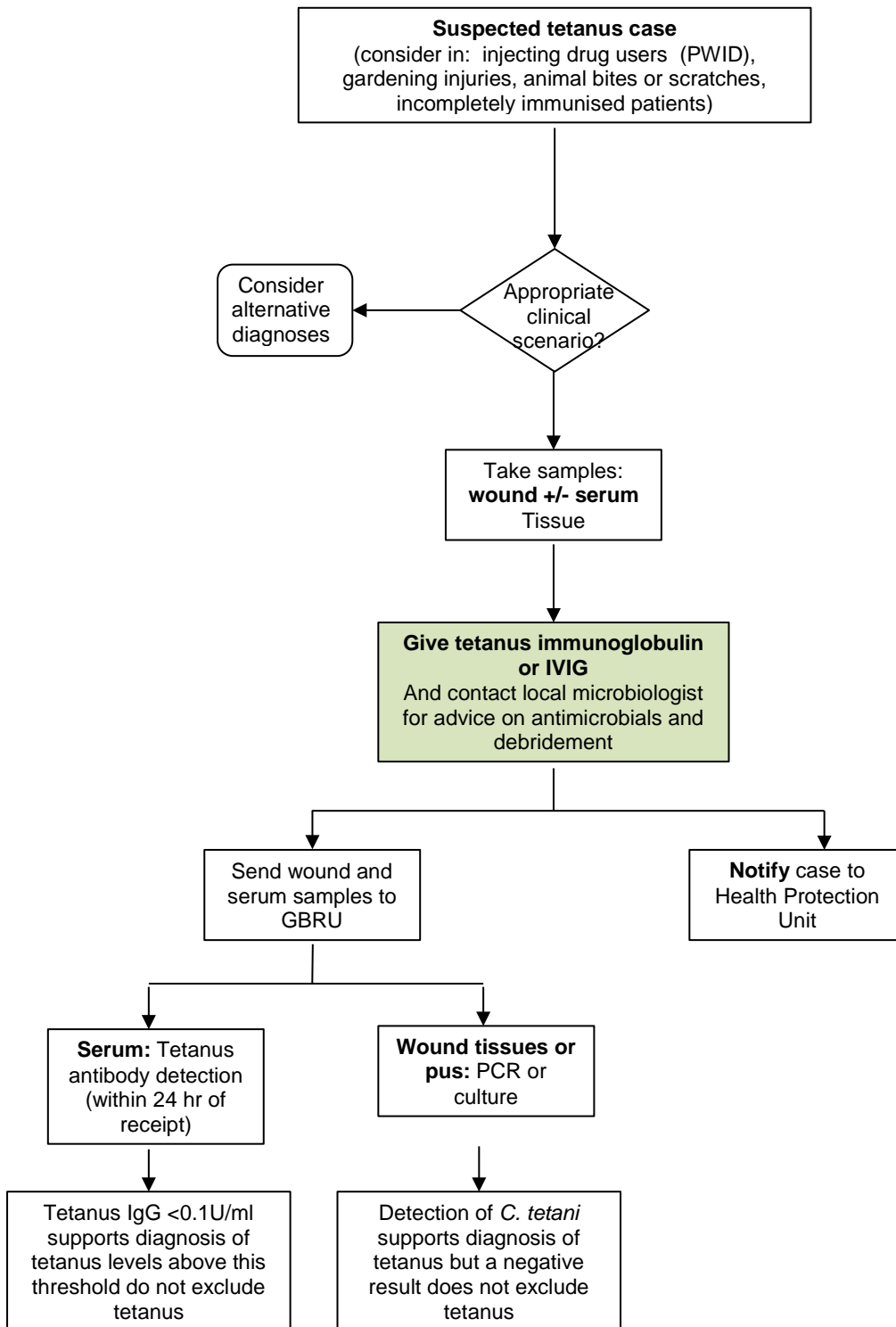


References

1. Salisbury D., Ramsay M., Noakes K. (2006). Immunisation against infectious disease (the 'Green Book'). London: The Stationary Office. Available at: <http://immunisation.dh.gov.uk/category/the-green-book/>
2. Mandell G.L., Douglas R.G., Bennett J.E. Clostridium tetani. In Mandell, Bennett, Dolin, eds. *Principles and Practice of Infectious Diseases*, pp 2537-43. Philadelphia: Churchill Livingstone, 2003. p2537-43.
3. Public Health England. *Tetanus cases by age group and year of onset in England and Wales 1984-2014* Health Protection Agency (2013) [internet] accessed 16 October 2017: https://www.gov.uk/government/uploads/system/uploads/attachment_data/file/419663/Tetanus_Cases_by_Age_Group_and_Year_of_Onset_England_and_Wales_1984-2014.pdf
4. "Tetanus in England and Wales: 2015", *HPR* 10 (13), 1 April 2016.
5. "Tetanus in England: 2016", *HPR* 11 (13), 31 March 2017.
6. Rushdy A.A., White J.M., Ramsay M.E., Crowcroft N.S. Tetanus in England and Wales, 1984-2000. *Epidemiol. Infect.* 2003;**130**:71-7.
7. Collins S., Amirthalingam G., Beeching N.J. Chand M.A. et al. Current epidemiology of tetanus in England, 2001-2014. *Epidemiol. Infect.* 2016, 144: 3343-3353.

8. Hahné S.J.M., White J.M., Crowcroft N.S., Brett M.M., George R.C., Beeching N.J., *et al.* Tetanus in injecting drug users, United Kingdom [letter]. *Emerg Infect Dis* [serial on the Internet]. 2006 Apr. Available from <http://www.cdc.gov/ncidod/EID/vol12no04/05-0599.htm>
9. Chin J. (editor). *Control of communicable diseases manual*. Washington: American Public Health Association, 2000.
10. WHO, The Immunological Basis for immunization series Module 3: Tetanus Update 2018. <http://www.who.int/immunization/documents/ISBN9789241513616/en/>
11. "New vaccinations for the childhood immunization programme". Chief Medical Officer (CMO) Letters 10 August 2004. Department of Health.
12. <https://www.gov.uk/guidance/notifiable-diseases-and-causative-organisms-how-to-report>

Appendix 1: Algorithm for diagnosis of tetanus



Note: The laboratory tests are supportive and may need expert opinion for interpretation as detailed in Section 5.

Contact numbers at Colindale:
Clinical management: 0208 327 6736
Laboratory enquiries: 0208 327 7787

Appendix 2: Results from Tetanus Antitoxin assays for Human Normal Immunoglobulin

Testing of human normal immunoglobulin products Subgam and Viagam for levels of tetanus antibodies was performed at the National Institute for Biological Standards and Control (NIBSC) in 2008 and 2011. In 2016, NIBSC undertook further testing of Subgam (for subcutaneous or IM use) and eight IVIG products commonly in use in the NHS: Vigam 5%, Gammaplex 5%, Privigen 10%, Octagam 10%, Intratect (5% & 10%) and Flebogama (5% and 10%) . All products tested were comparable in terms of tetanus potency. The 5% products have a tetanus potency of approx. 15 IU/ml and the 10% products of approximately 30 IU/ml,. Due to the slight variability between the products and batches, the lowest antibody levels found have been used to calculate the doses of human normal immunoglobulin required to achieve the recommended dose of tetanus antibodies.

Year of test	Product	Manufacturer	Route	Batch number	ELISA IU/ml (95% ci)	TNT assay IU/ml
2008	Subgam	BPL	SC/IM	SCBN7647	63	57 (48-69)
2008	Subgam	BPL	SC/IM	SCBN7651	64	57 (48-69)
2011	Subgam (750mg)	BPL	SC/IM	SCBN8611	66.4	
2011	Subgam (750mg)	BPL	SC/IM	SCBN8949	56.9	
2011	Subgam (1500mg)	BPL	SC/IM	SCAN9129	60.8	
2008	Vigam	BPL	IV	VLAN7724	23	26 (18-46)
2008	Vigam	BPL	IV	VLAN7759	20	18 (15-22)
2008	Vigam	BPL	IV	VLAN7730	23	21 (18-26)
2011	Vigam (5g)	BPL	IV	VLCN9116	17.5	
2011	Vigam (5g)	BPL	IV	VLCN9117	17.9	
2011	Vigam (10g)	BPL	IV	VLAN9219	15.9	
2011	Vigam (10g)	BPL	IV	VLAN9220	15.9	
2016	Vigam 5%	BPL	IV	VLA15350 VLA15015 VLAN0825	15.3 (14.5-16.2) 16.7 (15.8-17.6) 17.6 (16.7-18.6)	21.0 (17.8-25.4)
2011	Gammaplex (5g)	BPL	IV	VSCN8627	17.8	
2011	Gammaplex (5g)	BPL	IV	VSCN9016	17.2	
2011	Gammaplex (5g)	BPL	IV	VSCN9156	19.6	
2011	Gammaplex (10g)	BPL	IV	VSAN8599	21.6	
2011	Gammaplex (10g)	BPL	IV	VSAN9070	16.7	
2011	Gammaplex (10g)	BPL	IV	VSAN9083	17.6	

Year of test	Product	Manufacturer	Route	Batch number	ELISA IU/ml (95% ci)	TNT assay IU/ml
2016	Gammaplex 5%	BPL	IV	VSB15360 VSA15074 VSA15278	15.0 (14.2-15.9) 16.6 (15.7-17.6) 14.7 (13.9-15.6)	19.8(16.8-24.0)
2016	Privigen 10%	CSL	IV	432900015	27.7 (26.0-29.5)	32.6 (27.7-39.5)
2016	Octagam 10%	Octapharma	IV	L609A8541 A436B854E A550B8542	30.1 (28.2-32.0) 34.3 (32.2-36.6) 31.2 (29.5-33.0)	39.6 (33.7-47.9)
2016	Intratect 10%	Biotest	IV	B790035 8 B790035 6 B790016 02 B790155 7	24.0 (22.8-25.4) 25.8 (24.5-27.3) 30.7 (28.5-33.2) 28.2 (26.2-30.5)	27.9 (23.8-33.8)
2016	Intratect 5%	Biotest	IV	B791275 6 B791405 13 B791615 6 B791415 4	15.7 (14.6-16.9) 14.6 (14.0-15.3) 15.4 (14.7-16.1) 14.5 (13.8-15.1)	
2016	Flebogamma 10%	Grifols	IV	IBGP4JNJP1 IGGP5B6001 IBGN4DIDK1	29.3 (27.5-31.2) 32.1 (30.2-34.2) 31.4 (29.5-33.4)	36.1 (30.7-43.7)
2016	Flebogamma 5%	Grifols	IV	IBGL5DCDE1 IBGK4EPES1 IBGJ5R4R61	14.8 (14.0-15.6) 16.3 (15.5-17.2) 15.6 (14.8-16.4)	

Manufacturers' contact details:

BPL (Bio Products Laboratory) Tel: 020 8258 2200

Grifols UK Ltd Tel: 0 845 2413090

Biotest Uk Ltd Tel: 0121 733 3393

CSL Behring 01334 447400

Octapharma 0161 837 3771

Appendix 3: Useful Contact Details

For advice regarding clinical management of cases or other queries relating to suspected cases during office hours, please contact the on call duty Consultant Microbiologist, PHE Colindale on 0208 327 6736 or email ColindaleMedMicro@phe.gov.uk. The PHE duty doctor is requested to discuss all suspected cases with the on-call Consultant Microbiologist if calls are received during working hours. Out of hours please contact the PHE Duty Doctor on call 0208 200 4400 for all queries and advice.

For queries related to sending clinical samples and interpretation of toxin testing results: Gastrointestinal Bacteria Reference Unit (GBRU), Public Health England, 61 Colindale Avenue London NW9 5EQ. (Tel: 0208 327 7887). Please notify the laboratory when sending samples.

For queries regarding interpretation of serology testing, please contact the Respiratory and Vaccine Preventable Bacteria Reference Unit (RVPBRU) for advice (Tel: 0208 327 7887).