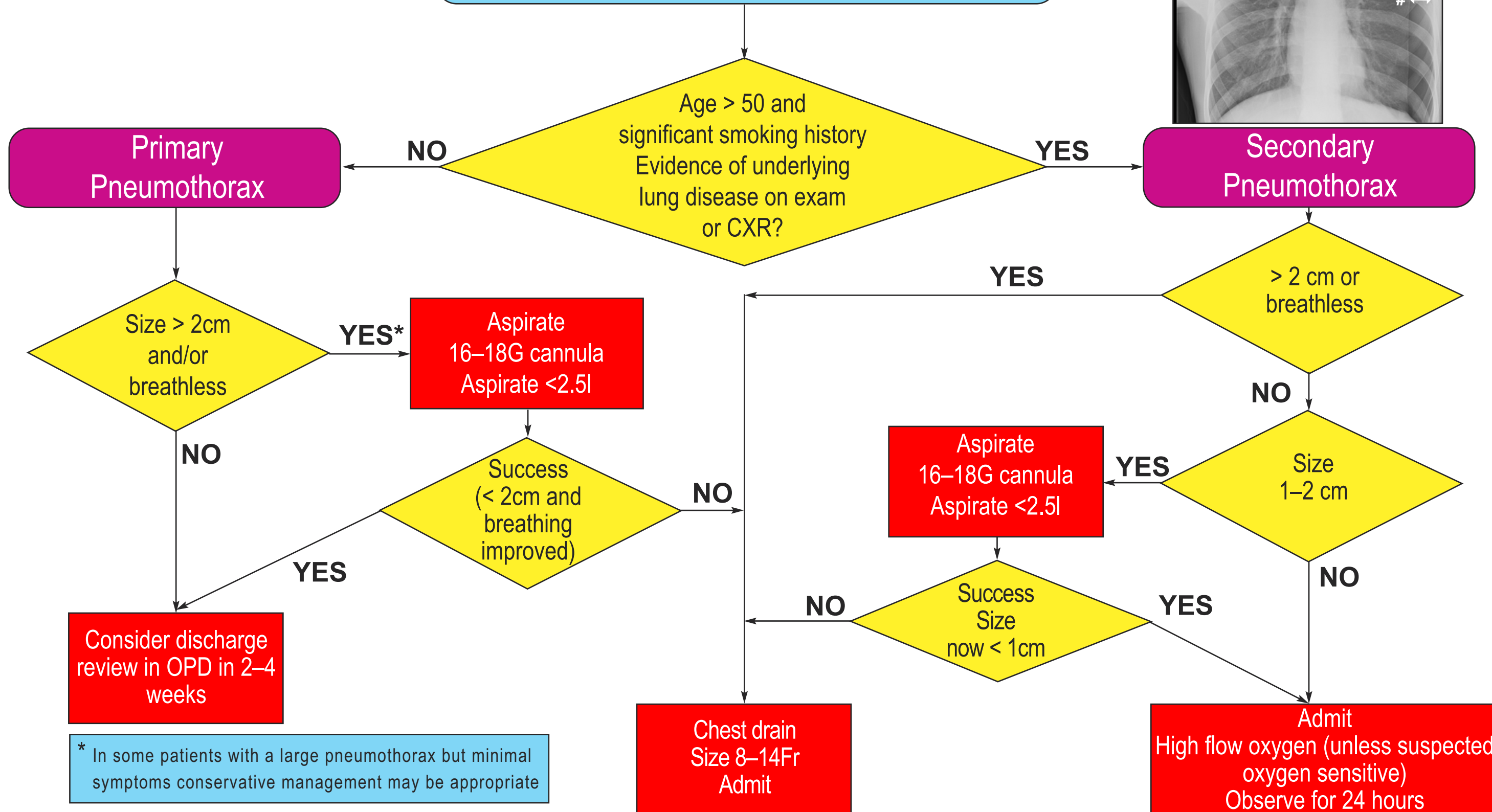
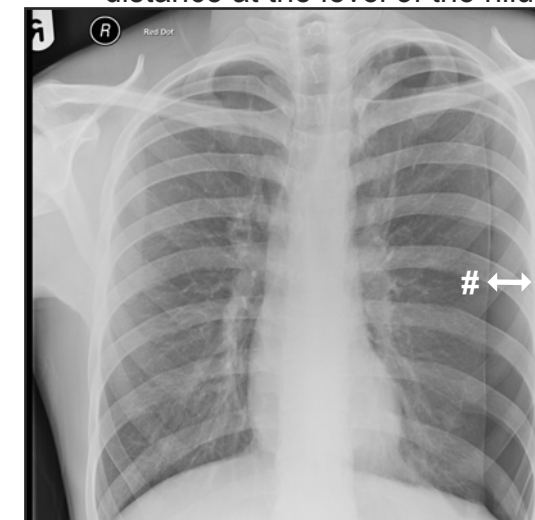




# MANAGEMENT OF SPONTANEOUS PNEUMOTHORAX

**Spontaneous Pneumothorax**  
If Bilateral/Haemodynamically unstable  
proceed to chest drain

# Measure the interpleural distance at the level of the hilum



\* In some patients with a large pneumothorax but minimal symptoms conservative management may be appropriate